

NEW PLYMOUTH

GREY POWER

50+ NEWSLETTER

QUARTER TWO 2023 - WINTER

www.greypowernp.org.nz

AGM

Wednesday 31st May 2023 at 1.30pm
Barclay Hall, 158 Tukapa Street, New Plymouth

GUEST SPEAKER: Graham Walker
Consumer Group Taranaki Base Hospital

All welcome, bring friends.
Parking is available in the Church car park as well behind the Barclay Hall.
Special P.M. tea to follow meeting.

REMEMBER THOSE SUBS PLEASE
THERE ARE SOME STILL OUTSTANDING. *Thank you.*

GREY POWER NEW PLYMOUTH INC.

158 Tukapa Street, Westtown, New Plymouth, 4310

Phone: (06) 757 5885

Email: greypowernp@gmail.com

www.greypowernp.org.nz

Office Hours: Wednesday, Thursday, Friday 9am - 1pm

COMMITTEE 2022 - 2023:

PRESIDENT: Wally Garrett 7550 988

VICE PRESIDENT: Alison Brown 7588 040

TREASURER: Joy Southee

COMMITTEE SECRETARY: Sharon Mace

MEMBERSHIP SECRETARY: Karen Hamer

PUBLICITY/ADVERTISING AGENT: Sharon Mace

COMMITTEE: Caroline Symmans, Kathy Sutton,

Colin Kilpatrick, Dennis Eales, Val Armstrong.

TRAVEL TEAM: Kathy Sutton - 022 1050 454 /

Val Armstrong - 027 289 1810 / Dennis Eales /

Margaret Humphries

Office Co-Ordinator: Agnes Lehrke 769 9630

Distribution of Newsletters:

Peter Huzziff 027 602 7203

Business Discounts

Our Grey Power Logo will hopefully be displayed in shop windows, doors or counters to remind Grey Power members where discounts are available.

Therefore have your membership card ready for a check out and spread the word. Of course it is reaffirming to acknowledge the discount. Especially in these times.



A COMMON MISCONCEPTION:

Grey Power is not aligned with any politician or political party. We are an advocacy group and we present our views to Parliament to try to get a better deal for all Superannuitants. As such we will speak to any political group or politician who is likely to make a difference on our behalf. We also seek to keep all our members informed on what Grey Power has been doing on their behalf.

Disclaimer: The information contained in this publication is given on good faith and has been derived from sources believed to be reliable and accurate. Neither Grey Power New Plymouth Inc. nor any person involved in the presentation of this publication accept any liability whatsoever for its contents including advertisements, editorials, opinions, or for any consequences or from its use.

This publication is designed and printed by Kiwi Publications Limited.

For advertising phone Sam on 027 872 6629 or email: samanta@kiwipublications.nz

www.kiwipublications.co.nz

Please refer to our website for disclaimer.

President's Word



Inflation, supply and demand, has us all in its sights and Grey Power New Plymouth is not immune to these effects.

We have been subject to significant cost increases with the publishing of this Newsletter.

To help defray some of the costs associated with the production and distribution of the Newsletter, we will where possible, send you your Newsletter via an email version. I know that many, myself included, would probably prefer the paper variety, however it is another sign of the times that we now live in and the cost pressures that we are under.

Related to this, is the increasing importance of getting our subscriptions paid in a timely fashion. As you will all appreciate, it costs the same to cover the basic overheads of Power, Rent, Office supplies, etc to run our Association, irrespective of how many members we have.

As many of you will know, Grey Power New Plymouth has received some funding during this financial year for which we are very grateful. This funding in the main is for specific purposes such as office equipment or particular events but, in general, it is the subscriptions that keep us afloat through the year on a day to day basis.

As this is my last column as your President, I will say that I have enjoyed my time on the Grey Power committee and have had the pleasure of being involved with some very hard working and dedicated people who toil away on behalf of Grey Power New Plymouth and the wider field of Grey Power New Zealand.

We belong to a great organisation, that works hard behind the scenes, advocating for its members on the national stage to achieve better outcomes for the older folk in our communities.

Wally Garrett (President)



A busy night at Stone Henge as workers move all the stones back one hour...

Business Discounts:

We have lists of these Discounters available as well as the list on the website.

Lists have been devised rather than booklets which soon outdate.

There is a folded leaflet for you to use at the office, available on request. As the discounters change this list will be easier to update and reprint.

The website is **www.greypowernp.org.nz**
Our phone number is 757 5885.

Remember to show your membership card before reaching the transaction.



Grey Power Office has two petitions for signatures.

1. **The Royal College of practitioners**, which is very urgently in need of our support to maintain our G.P.'s.
2. **Advanced Care Planning.**
A petition to protect patient's wishes .

If you wish to sign these please call at the office. The petition for practitioners could also be at your G.P.'s Surgery or Centre.

Simple But Significant

a simple cremation & burials

Helping Taranaki families with a range of simple, professional funeral services. With affordable caskets, urns & jewellery.

0800 236 236 233 Carrington St
www.asimplecremation.co.nz New Plymouth

GREY POWER COFFEE MORNINGS



Grey Power members and friends are enjoying these occasions for cuppas, chats and new friends. We enjoy the company, so why not join us.

Coffee days are the first Monday of the month at 10am, at Aroma Café. The next day Tuesday if the Monday is a holiday.

A few tables are booked for our use. Any member may join in and maybe there are some potential new members to come.

Let's give this our support. Come and spend time together, bring a friend. Put this on your calendar.

See you there.

Glen Bennett

MP for New Plymouth

Contact our friendly team:

78 Gill St, New Plymouth

06 757 5662

glen.bennettmp@parliament.govt.nz

[/glenbennettlabour](https://www.facebook.com/glenbennettlabour)



Authorised by Glen Bennett MP,
Parliament Buildings, Wellington



Have Your Say on the Future of Transport in Taranaki

Are you a bus user or would like to start using public transport? Or is road safety and how speed is managed something you want to talk about? Or do you want opportunities for walking or getting out and about on your bike?

Taranaki Regional Council has launched a wide-ranging community conversation giving everyone in the region the chance to have your say on the future of transport with the views helping to shape public transport, cycling and walking, road speeds and safety.

Council Chair Charlotte Littlewood says getting feedback from public is essential ahead of developing a number of key strategies and plans which aim to improve active and sustainable travel in the region and make local roads safer to travel on.

"The feedback we're seeking is crucial as we work together to look at what transport should look like in both the short and long-term so we'd like as many people as possible to get involved,"

"It can be about anything our community feels is important as well. We've created a map where people can comment on key issues like safety and speed, public transport, cycling and walking, people's vision for the future of transport and anything else they think we need to know about.

It's all about a partnership with our people as well as partners such as Roadsafe Taranaki and the three district councils, so we get people moving safely whilst boosting options for those who want to switch to active and sustainable travel."

The public will be able to comment on the bus services across Taranaki with the feedback helping to shape consultation later in the year on Citylink, South link and Connector routes.

District Councils will later in the year consult with the public about their speed management plans. There will also be the chance for our community to have a say on the Better Travel Choices strategy and if we've got it right. All this will feed into developing a regional Land Transport Plan in 2024 for the next 10 years.

We need your feedback so head to trc.govt.nz/transport to comment or take part in the survey from March 15 to 30 April 2023. There is a \$200 prezzy Card up for grabs for partakers.


The road ahead: **Putting together a plan for Transport in Taranaki.**



What's happening...



Acclaimed Pakistani artist Aisha Khalid brings her bold and unapologetic work to Aotearoa for the first time



I AM AND I AM NOT AISHA KHALID
1 APR - 16 JUL 2023

Opening soon

Aisha Khalid, *The Garden Of Love Is Green Without Limits* (detail) 2019, Courtesy of the artist.

govettbrewster.com

GOVETT - BREWSTER ART GALLERY

50+ FORWARD
GYM CLASSES | 9am-10am | Mon, Wed and Fri.

AQUAROBICS
SHALLOW 9am - 10am | Mon, Wed & Fri
DEEPWATER 9.15am - 10.15am & 5.50pm - 6.50pm, Tues & Thurs.

Todd Energy
Aquatic CENTRE

06-759 6060
npdc.govt.nz

TODD ENERGY NPDC

Active IN AGE

Every Tuesday at TSB Stadium from 10am -12pm.
\$5 cash per person participation cost.


TSB Stadium NPDC



STATE OF NATURE
PICTURING THE SILENT FOREST

7 APR - 5 NOV 2023
TEMPORARY GALLERY

Puke Ariki



A NATURAL WOMAN
CELEBRATING THE MUSIC OF Carole King



THEATRE ROYAL NEW PLYMOUTH | SAT, 20 MAY 2023 7:30PM
1 SHOW ONLY • TICKETEK.CO.NZ

NPOS PRESENTS THE 2023 GJ GARDNER SEASON OF

WE WILL ROCK YOU

THE MUSICAL BY QUEEN AND BEN ELTON

25 MAY - 10 JUNE 2023
NEW PLYMOUTH

npos G.J. Gardner. HOME TSB SHOWPLACE TICKETEK Book Now at Ticketek

GREY POWER TRAVELS for members 2023



On the 6th of April we travelled to Pukeiti to capture the beautiful gardens and quiet bush scenes.

Although this was a small group visiting the area, it was an occasion that was filled with enthusiasm by members who entered into the real spirit of travel. It was a most enjoyable day out together. Pukeiti is special whenever you visit this lovely place. Rob's Rings in Surrey Road also provided much interest. We saw the extent that this craft has developed to meet the requirements of customers and the market today.

Then we ate at the Butler's Reef and having replenished our energy, visited the Ukelele workshop and the Crafty Fox magnificent display of arts & Crafts.

A great day out. Thank you all for joining us.

Dinner at the Fitz

Our next event is the **7th of June** when we dine together at midday at the Fitz in Fitzroy. See you there. It would be good to get numbers attending for the Fitz dinner count. Please pay when you enter the Fitz. \$27.00 pp. or you may choose to just have the main meal. Thank you.

September 6th - Wellington Travel

We travel down on Wednesday the **6th of September**, stay two nights, and return home on **Friday the**

8th. We will visit Te Papa and hopefully the Anzus Display. The Weka Factory, perhaps the Cake Tin. The accommodation should work out suitably, but is not quite finalised yet. We return home on the third day Friday the 8th. On the return trip we may visit the Police Academy.

There is the grant money given for travel which should make the travel inviting for members. Please show your interest by ringing the Office. We haven't all the travel information at time of this Newsletter going to print but will do shortly. Costs etc. need to be accurate before quoted and I'm sure you understand this. Thank you.

November 2nd - visit to Taranaki

Gardens (*Mystery Trip*)

Several gardens central Taranaki are worthy of a visit. So we will choose the ones that have short walks. We will leave the Raceway car park at 9.00am and lunch at the Hollard Garden where there is a comfy centre. More in the August Newsletter for these two Travel occasions. Remember to show your interest by contacting the Office. \$30.00.



Why balance could be a matter of life and death – and how to improve yours

Studies have shown poor balance can be associated with serious health problems – as well as increased risks of falls as we get older.

Until we start to lose our balance, we barely notice that it's there at all. "It starts for a lot of people with simple stuff," says Dr Anna Lowe, an expert on healthy ageing and physical activity. "Maybe you used to be able to quickly stand on one leg to put something on, and now you have to hold on to something."

The World Health Organization estimates that 684,000 fatal falls occur each year, making falling the second leading cause of unintentional injury death, with a further 37 million falls severe enough to require medical attention.

If you experience a sudden, noticeable change in your ability to balance you should consult a professional. But a slow, barely noticeable decline will be the thing most people should worry about.

The loss of balance starts at 45, and it's very clear," says author George Locker. "So you have to start prevention

in midlife." "You've got to stay active," agrees Lowe, who is also a physiotherapist. She says general activity, just moving around and doing stuff, affects balance a lot. Yoga, tai chi or gym work are exercises where you can manage that unsteady feeling. Whatever activity you choose – and whatever stage of life you're at – the take-home lesson is to work on your balance before you need to not after it becomes an issue.



Do you need help finding a trades person to do jobs around your home - either inside or out ?

The staff at the Grey Power office might be able to assist.

We hold a list of Taranaki service providers, including those businesses who provide discounts to Grey Power members and SuperGold card holders.

Our list also includes local businesses who have been recommended by our members.

Please make contact with us if you would like support in finding a suitable person to assist with tasks around your home.

Phone our office (06-7575885)

or Agnes (021 0229 8721)

or email us at greypowernp@gmail.com

We would love to receive feedback on these service providers to assist with future recommendations.



Tip For Occasional Lotto Players and Gift Cards

Are you an occasional Lotto player who buys a ticket at the supermarket when the jackpot reaches \$12 million, or gets a Lotto ticket for your birthday or Christmas?

Do you forget that you have it and don't get around to checking the numbers?

You may have won a million dollars and not even realised it.

A recent Herald article highlighted a Lotto player from Ruapehu who went two months unaware he had won \$1 million until Lotto NZ phoned him to deliver the good news.

He normally bought his ticket at his local store but had been working late and didn't have time to get to the shop so he used the My Lotto online option to get into the draw. Clearly with an online Lotto account Lotto NZ know where to find you when your numbers come up.

He did say he preferred to support his local business and usually if you have won the main prize media publicity of the store selling the ticket and associated speculation will drive you to find your ticket and check it – not so easy for smaller prizes.

The article also mentioned he hadn't decided when to tell his wife of the good news. Not smart, he could risk serious damage instead of happy shared joy.

For us oldies, an online Lotto account to buy our tickets might be a good idea.

A further thought is always to spend gift cards for birthdays or Christmas you receive quickly. It is very easy to leave them in the card or put them aside and never use them particularly if they are from a store you don't regularly visit.

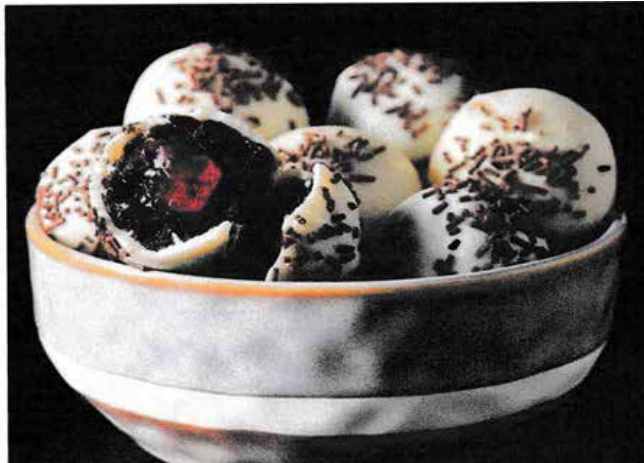
The number never redeemed is quite high. Some years ago the operator of the long gone Music Man vouchers for records or CD's advised that 25% of the vouchers were never claimed and written back each year.

Many gift cards have expiry dates, usually twelve months. Never accept this as gospel and challenge the retailer involved if you have overlooked redeeming them in time, and they will invariably be re-issued or accepted.



Dessert | 15 mins Serves 16

Black Forest Chocolate Truffles



This dessert recipe is super simple and also simply delicious! Using a classic chocolate mudcake as the base, these Black Forest Chocolate Truffles are sure to be a favourite with friends, family and whānau.

Ingredients

Chocolate mud cake (approx. 320g) - 1/2
 Cream cheese, soft - 2 Tbsp
 Glacé cherries - 200g
 White chocolate melts - 200g
 Chocolate sprinkles, to decorate - 2Tbsp

Method

Step 1: Line a baking tray with baking paper.
Step 2: Crumble the cake into a bowl. Add cream cheese and stir well to combine until the mix holds together, adding more if necessary.
Step 3: Roll into walnut-sized balls. Press a cherry into the centre of each and re-roll to cover. Place onto the prepared tray and freeze for 30 minutes.
Step 4: Melt the chocolate melts in a small bowl. Dip each ball into the chocolate to coat, allowing excess to drip off. Decorate with sprinkles and place back onto the tray to set.

Tabs On Cling Wrap and Foil

Taking aluminium foil or cling film out of the box can be a total pain. Well, you don't have to feel that way ever again as there are little tabs on every box that you can push. The tabs help grip the roll and it stays in place as you pull.



Pukekura Park

Guiding the Next Chapter

New Plymouth's renowned Pukekura Park is approaching a significant milestone and will celebrate its 150 Birthday in 2026.

Established in 1876, the park has grown over the years to now comprise around 52 hectares (128 acres) in the central City.

Originally funded and run by a Board of Trustees in order to avoid additional burden on ratepayers, the park was handed over to the New Plymouth Borough Council in 1929. It was still administered by a committee of citizens until 1960 when this was transferred to the Council.

Central Government has rules around how local authorities administer Reserves, Domains and Parks. Pukekura Park is required to have a Reserve Management Plan (RMP) which was reviewed last year. This update now reflects priorities and changes necessary.

Last year the community was invited to discussions on the possible changes. Along with the management team, the draft plan needs feedback from the community to progress.

Submissions will be accepted and an opportunity to directly address these will be heard at a formal hearing. The park review includes Brooklands Zoo, the Bowl and stage as well as the Pavillion, and Terraces.

There is further upgrade required for the park tracks used, the Tea House, Cannon Hill seating and the consolidation of operational staff and the Water bodies.

HAVE YOUR SAY:

Submissions will be accepted digitally or physically, on line portal on the website after the opening of the consultation period. We need to get this right for the future of our park. So view the draft Pukekura Park RMP on the council website or at the libraries in the district. What happens today will influence the future of our Park.



Dinner at the Fitz June 7th at 12 noon

It was difficult to sort travel mid year, as winter will be upon us. So the plan is to go with a dinner for Grey Power members instead.

We are pleased to say the dinner will be daylight hours and hopefully a jolly good occasion for those who attend. The cost is \$27.00 dinner and dessert.

We will each pay at the Fitz as we order thank you.

Please show your interest by contacting the office so we can have numbers for the cooks. 757 5885 / Kathy on 022 1050 454 or Val on 027 289 1810.

Come, enjoy the music and time together.

See you there!



Feel at home

at Enliven's Chalmers Home

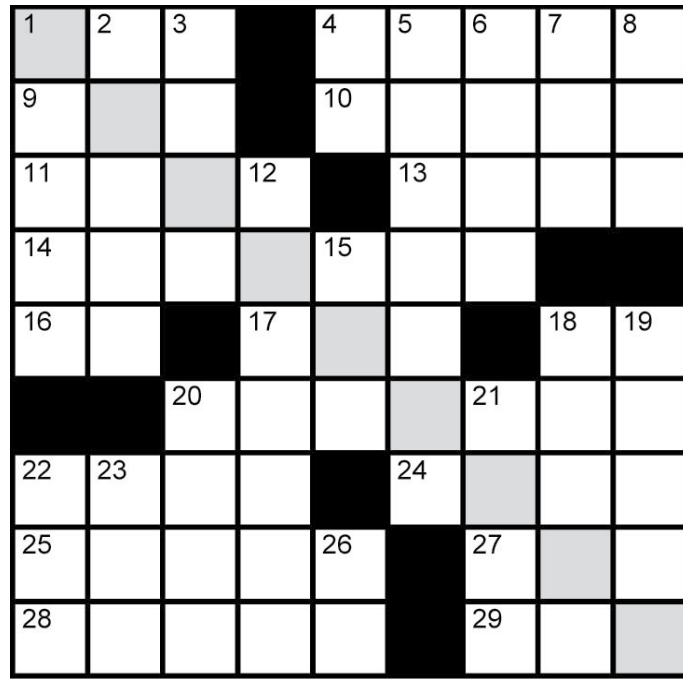
Enliven creates elder-centred communities that recognise elders as individuals and supports them in a way that's right for them.

Enliven's Chalmers Home in New Plymouth offers top quality care in a warm, welcoming home-like environment with breath-taking views overlooking the Tasman Sea and Mount Taranaki.

rest home | hospital | dementia
 short term respite | health recovery | day programmes

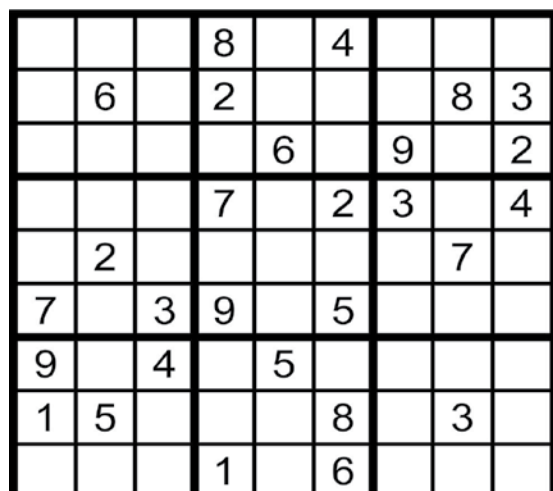
For more information please visit:
www.enlivencentral.org.nz

Zoom Lens



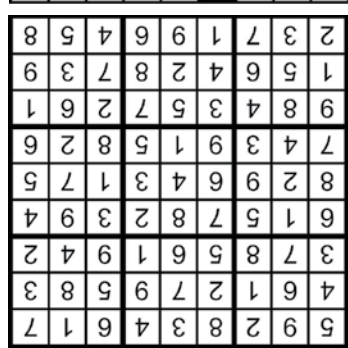
- Across
- 1. Wharton degree
 - 4. Captain's superior
 - 9. Mr. Potato Head piece
 - 10. Solo
 - 11. Pad
 - 13. Feudal estate
 - 14. Marvel Comics superhero
 - 16. Indefinite article
 - 17. Furnace fuel
 - 18. First word of the Constitution
 - 20. Tungsten alias

- AUGUSTA NATIONAL
- CARNOUSTIE
- CHICAGO
- ELLERSTON
- HIRONO
- MERION
- MUIRFIELD
- MUIRFIELD VILLAGE
- OAK HILL
- OAKMONT
- PEBBLE BEACH
- PINE VALLEY
- SAND HILLS
- SEMINOLE
- SHANQIN BAY
- THE OCEAN COURSE
- WINGED FOOT
- YAS LINKS



How to solve sudoku puzzles. No math is required to solve a sudoku. You only need logic and patience. Simply make sure that each 3x3 square region has only one instance of the numbers 1-9. Similarly, each number can only appear once in a column or row in the larger grid. *The difficulty on this puzzle is medium.*

- 22. "___ Louise"
 - 24. White House staffer
 - 25. French farewell
 - 27. Service charge
 - 28. Lyricist's writings
 - 29. Slip up
- Down
- 1. The press
 - 2. Wee one
 - 3. Cornstarch brand
 - 4. Cellist Yo-Yo --
 - 5. Little rascal
 - 6. Enlist in
 - 7. Start of long-distance dialing
 - 8. Gridiron official, for short
 - 12. Napped
 - 15. Bag thickness
 - 18. Angler's boot
 - 19. Arab leader
 - 20. Small dam
 - 21. Abounding
 - 22. Moose ___, Saskatchewan
 - 23. Tokyo, once
 - 26. You and I



The crossword headline is a clue to the answer in the shaded diagonal

TOP GOLF COURSES



REMEMBER

1. **Bingo.** Monday 8th May 6pm. Stumble Inn.
2. **Fitz Dinner.** Midday. Wednesday 7th June.
3. **Sausage Sizzle** Saturday 10th June 9.30am Mitre 10. Valley.
4. **Sausage Sizzle** Saturday 5th August 9.30am Mitre 10.
5. **Wellington Travel** Wednesday 6th September. *See travel.*
6. **Gardens Tour.** Thursday 2nd November. *See Travel.*

*See you there.
Why not come and help.*

MAGAZINE CONTENT

Contributions for our magazine are always welcome. If you would like to make a contribution, send us a short story, poem; recipe, letter to editor; household hint; notes on a trip away; anything you would like to share with other members. Please send to the editor for publication - agnesmaire@gmail.com or greypowernp@gmail.com Our next issue will be out April.

Bingo night At Stumble Inn

Monday 8th May - 6pm

Help Grey Power raise funds.
(1½ hours of fun) Great prizes.
\$5.00 a board. Usually 4 boards.

Bring a few friends and make it a great event.

For contact:
757 5885 / 021 02298 721

See you there! If you can't come maybe you could donate to the funds. *Thank you*

our Sausage Sizzle's are Saturday June 10th AND Saturday August 5th

At Mitre 10 Valley 10.00am - 1pm
DO support us with our fund raisers.

See you there.

Sharon Mace
Licensed Salesperson REA 2008

RE/MAX Team Realty
Each Office Independently Owned & Operated

Buying or Selling? Call me for a chat

As a Grey Power member myself and your Committee Secretary I'd love to help you achieve your Real Estate goals.

027 230 5685 | 06 759 8084
sharon.mace@remax.co.nz

RE/MAX Team Realty GVM Ltd | Licensed REA 2008

The Wind And Me

I wish I was the wind so free
To toss the foam and spray,
Above the wild and raging sea
I would tear it so far away.

I so wish I could skim the land,
I'd rush o'er hills and valleys then,
I'd fly without a magic wand,
And the countries I would ken.

I would be messenger of Spring,
And of Autumn soft and ripe,
The snow and hail I'd wildly fling,
Then the call of Summer I'd pipe.

I'd whirl from land to land
To Europe and to China,
Then I'd visit a desert land,
There's naught than a sand-storm finer.

Although the wind is wild,
And it may seem so free,
Just be a thoughtful child,
For I'm so glad I'm me.

Pat Ryan written in 1946.

HEARING AID MISSING

The old man was sitting on the examining table in the doctor's office having his hearing checked. The doctor poked his light scope in the old man's ear and said, "Hey, you have a suppository in your ear!"

"Rats," said the old man.
"Now I know where my hearing aid went."

Realized I had to use the bathroom. Got up and walked across the house, to the pantry. Couldn't remember why I was in the pantry. Remembered I had to use the bathroom. Walked across the house to the bathroom. Sitting on the throne I remembered why I went to the pantry ... Toilet paper.

Letter from a senior Taxi driver of New Plymouth Taxis (AKA Blue Bubble).

Dear Sir/Madam,

Re: New Plymouth Grey Power, Quarter One 2023 Page 9 "Be Brave Nana".

I am a Grey Power member and also a Taxi Operator in New Plymouth with New Plymouth Taxis (AKA Blue Bubble). I was very alarmed when I read the article "Be Brave Nana".

For your information Blue Bubble Taxis are a nationwide organisation and have a very high service standard. If these two drivers were part of our organisation we sincerely apologise for the lack of assistance that should have been provided. However in our research we cannot determine what company provided this substandard service.

Prior to becoming a Taxi Operator, I had to fulfil 5 conditions:

1. Produce a clean Medical Certificate.
2. Prove that I had a clean National & International Criminal Record.
3. Complete a rigorous driving test.
4. Complete a Knowledge Test of the streets of New Plymouth.
5. Complete several day long Health and Safety courses as well as "Demonstrate knowledge of Driver requirements for passengers. (17579)

The latter condition 5. Is mainly focussed on assisting passengers into the vehicle by attending to their needs and ensuring they are safe and secure. In this incident this clearly wasn't carried out. On behalf of the Taxi industry in New Plymouth I sincerely apologise for the lack of assistance provided and as a share holder in New Plymouth Taxi Society I would be very disappointed if these Drivers belong to our organisation.

There is a slight difference between the conventional taxi service -i.e. from door to door and the companion type service as provided by the likes of "Driving Miss Daisy." The door to door should provide all the assistance required including helping with the groceries - a service that is not charged.

The Driving Miss Daisy type of service is a companion service that incurs an additional cost for the time spent in assistance, i.e. any extra time taken in assisting patients into hospital will cost extra.

Waitara Community Service-FYI: There are Taxi Providers who reside in Waitara who are not prepared to offer a dedicated service to the Waitara Community - Blue Bubble Taxis are the only taxi provider in New Plymouth to provide a dedicated Waitara Service. This happens every Thursday between 0900 and 1300 to help members of the community attend Doctor appointments, visit the library, do shopping and carry out other chores.

Of the four groups that attended the New Plymouth Taxi Society Board meeting only the Blue Bubble have remained available to assist the Waitara Community.

Thank you for your response Lyn, we appreciate your time and effort to explain this point of view that clearly indicates your commitment to the community service you provide so well. All the Best .

QuinLaw - Barristers & Solicitors

CHALLENGE TO A WILL

You can challenge a will if;

- You are a family member and have been left out of a will, or you believe doesn't make adequate provision for you;
- The deceased made a promise to you that if you did something for you they would provide for you in his/her will;
- You are the partner of the deceased and want to claim a half share of the Relationship Property;
- You can show the deceased did not have the mental capacity to make the Will;
- You can show there was undue influence on the deceased while making the Will

Removing and Replacing Executors

This requires an application to the High Court. Unfortunately this will probably become more common with the Ministry of Justice encouraging people to do probate of their family member.

Examples to remove and replace an Executor are:

- An Executor not acting in the best interests of all beneficiaries;
- Not distributing the estate as soon as reasonably and lawfully possible (unreasonable delay);
- The Executor is living in the deceased's property rent free or for low rent;
- The Executor owes money to the deceased.

There is an increasing group of people who seem very entitled and equally believe that they are entitled to interpret the Will as they wish. That takes us back to Why do Executors think they can change Wills? Is it because we are not valuing the initial will itself.

The next point is that if you are going to make a claim or seek to remove or replace Executors there are time limits and you need to seek legal advice as soon as possible.

Editorial supplied by QuinLaw

For the MOST important decisions of your life see us

QuinLaw are dedicated to offering professional and cost effective legal services with a personal touch.

At QuinLaw "people matter"

- ✓ Estate Planning
- ✓ Wills and Trusts
- ✓ Enduring Powers of Attorney
- ✓ Sales
- ✓ Purchases



11 Robe St, New Plymouth
Phone: (06) 769 9687
Email: office@quinlaw.co.nz
www.quinlaw.co.nz



Grey Power New Plymouth Association Inc AGM Committee Nomination Form 2023

Name of Nominee	Membership Number	Position on Committee	Signature.
1.			
Proposer:	Signature		
Second Proposer:	Signature		
Name of Nominee	Membership Number	For Position ;	Signature
2.			
Proposer	Signature		
Seconder:	Signature		

The Nomination Form needs to be completed prior to the AGM and handed in at the office if possible.

This is just a nomination form not a voting one. All nominations will be voted on during the AGM meeting. So fill in the form and hand it in, email or post as able. (Label Nominations.) 158 Tukapa St. New Plymouth. greypowernp@gmail.com

Your nominee, (one you want to vote for) must sign the form and add their membership number on it also as nominees must be financial members for the process of voting. Committee members need to be active participants with a good team spirit and willingness to assist the growth and welfare of the Association.

Your support is greatly appreciated. **Have your say at the AGM on 31st May, 1.30pm** at Barclay Hall 158 Tukapa St. New Plymouth. Parking at church hall next door and behind the hall. Do come and hear the speaker as well. Special afternoon tea provided.

COMPUTER AND CELL PHONE HINTS :

To make an email larger to read or to print it out in a larger size just hold down "Control" and press + and the document will become larger. Control with - (minus) will reduce the size. I have also found on my cellphone that if I press the up arrow twice that the Capitals will continue until I change to the lower case format.

A daily Inspiration:

If we ever have a golden age, it will be because golden hearts are beating in it. [From Wings of Silver.]

OFFICAL NOTIFICATION OF DUE SUBSCRIPTIONS

SUBS WERE DUE BY THE 31ST MARCH 2023.

PLEASE do try and renew them now. Thank you.

The Subs have increased this year. Singles.....\$20.00 Doubles.....\$35.00. *Thank you.*

The decision was made at the AGM last year in order to meet rising costs.

Deletions of membership has to take place when subs are over due.

Payments can be made at the office (Wed. Thurs. Fri. 9.00-1.00 p.m.) by cash, eftpos OR by Direct Credit to bank account; **15 3948 0007390 00** you can also use phone banking, or automatic payments.

All payments need to be accompanied with the Application Form below please, as particulars change and we need to keep the register up to date. Waitara now has their Community House as a payment depot, which also may be useful for Urenui, Ureti and Mokau. Thank you to the Community House for accommodating our needs. A.M tea on 1st Fridays of month, all welcome. Our phone number is 757 5885 or 021 0229 8721. Call us for any questions.

MEMBERSHIP APPLICATION / RENEWAL FORM

Grey Power New Plymouth Assn Inc | 158 Tukapa Street, Westown, New Plymouth 4310
www.greypowernp.org.nz | Email: greypowernp@gmail.com | Ph: (06) 757 5885

*** Membership year is from 1 April to 31 March**

Membership: New Member Renewal Membership Number: _____

Type: Single (\$20) Dual (\$35) **Office Open: Wednesdays, Thursdays and Fridays - 9am - 1pm**

MEMBER DETAILS:

First: _____
Title Initials/Forename Surname Year of birth

Second: _____
Title Initials/Forename Surname Year of birth

Postal Address: _____

Post Code: _____ Phone: _____ Mobile: _____

Email Address: _____

PAYMENT DETAILS:

Subscription \$ _____ Donation \$ _____ Total \$ _____

All information will remain confidential and not supplied to any other party.

NOTES: Please return a completed form with every application. Payments may be made by eftpos, cash, method at our offices, internet banking into our bank account or phone banking.

Online Account: 153948 0007390 00. Please ensure your name and membership number appears in the reference section of the form. Your details will be kept private at all times. A stamped addressed envelope with postal applications would be appreciated.

Office use only

Date Received
Card Issued
Expires
Amount
Paid by
Date on Computer



What is Grey Power?

Grey Power is an Advocacy Association formed in 1986 for the Superannuitants who vigorously opposed the idea of a Surcharge on the Superannuation at that time. Thus Grey Power was formed only under the name of Superannuants'. Later changed to Grey Power New Zealand.

Our leadership is from Federation, the head office in Auckland where Grey Power began. This team of leaders advocate for our members with parliamentarians to achieve improved living situations for the elderly of New Zealand. There are 76 Associations throughout the country. These Associations are grouped into Zones so that as groups these gatherings can bring solutions for each and enable input with Federations' active role in advocacy.

We all take on the role of Advocacy however, trying to assist local members wherever possible. We seek discounts with businesses, electricity, hold forums with Age Concern and Positive Aging and our own General Meetings. All to communicate the latest items of much interest for members. Every effort to seek a better future.

Our major form of Communication however, is our local Newsletter. **It is produced quarterly and desperately needs sponsors to keep it afloat.** Federation send out their magazine to all financial members quarterly also. We offer travel and lately morning tea occasions so that members can meet others and socialise.

This is your local Grey Power. Please help us build it further with new members and do spread the word. We look forward to assisting you in the office at 158 Tukapa Street. Phone 757 5885.

Our email is greypowernp@gmail.com and web site www.greypowernp.org.nz.

If we all encouraged a new member each, what a strong thriving Association we would be. So share the good news. Take a friend to morning tea or a meeting. Or join our travel and other ventures. All very welcome. Now share the good news with others won't you. *Thank you.*

Is your Membership Subscription up to date?

Are you a financial/paid up member of Grey Power?
If your card has 31/03/2023 on it, then yes you need to renew your subscription.
Find the application form on Page 15 of this newsletter and fill it in.
Payment methods are at the bottom on the left hand side.

NEXT MEETING

Wednesday

23 August 2023

1.30pm at Barclay
Hall 158 Tukapa St
New Plymouth

YOUR QUARTERLY NEWSLETTER FROM
GREY POWER NEW PLYMOUTH

